

PouchPro Pouch Handling from Urania Engineering



Urania Engineering has been supplying pre-formed pouch sealing and packaging systems for over 25 years. We invite you to take advantage of our extensive technical experience in this specific field. Whatever the scope of your unique packaging requirements, Urania equipment will assure predictable and cost effective results.

Our entry-level system, **The PouchPro®**, has been engineered to excel in single pouch/product applications not requiring multiple changeovers. Loading operations can range from simple manual insertion up to fully automated pick and load devices. Setup parameters are stored electronically and selected with the touch of a button on our full color touchscreen HMI. The PouchPro® can process most types of pre-formed pouches, including zipper closure varieties. The four-position index system provides three stations to accommodate most peripheral operations, such as printing, labeling, and inspection. The PouchPro® can also be configured in a 'double-out' arrangement to double the cycle rate.

Typical Applications Include:

- Automatic Product Loading
- Labeling (Apply Only or Print & Apply)
- Ink Jet and Direct Printing
- Desiccant Feeding, Cutting, & Loading
- Vision Inspection & Product Verification
- Nitrogen Injection / Gas Flush



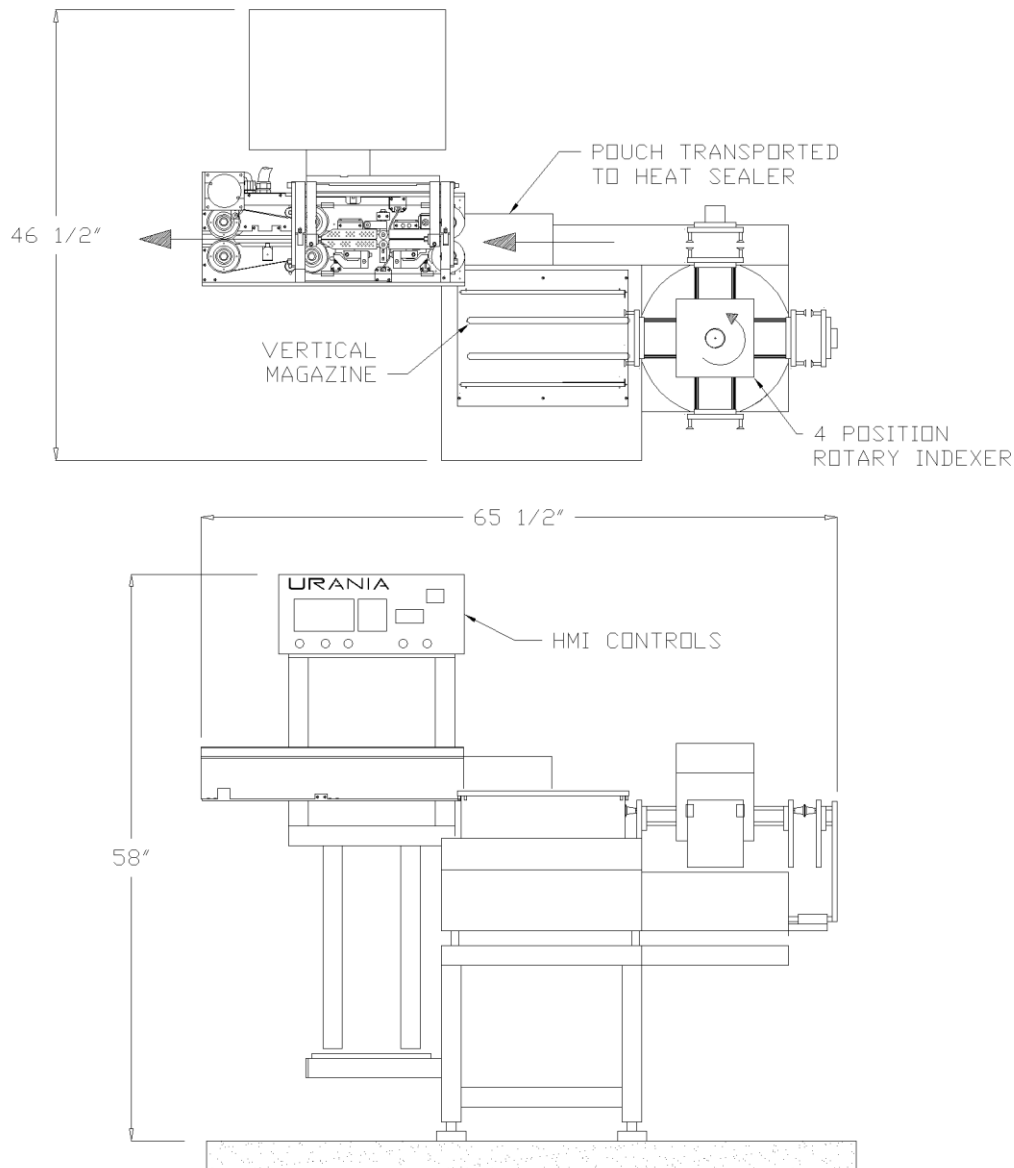
Urania's Packaging Answer, 5000P Heat Sealer, and PouchPro® systems efficiently accommodate all facets of pouch handling and heat sealing. In addition to covering a broad range of products in the medical device sector, Urania has unmatched experience in the final packaging of dry ingredients and a variety of liquid applications.



Pouch Types Supported:

- Stand-Up Plain & Zipper
- Pillow
- Three-Side Seal
- Vacuum Packaging
- Gusseted & Header
- Central & Back Seal





SYSTEM REQUIREMENTS & SPECIFICATIONS

Power Source:	220 VAC, 50/60 Hz, 20 AMP, Single Phase
Compressed Air:	6 CFM @ 85 psi
Size (excluding scale):	Approx 4' wide x 5' high x 7' long
Product Delivery Height:	To Suit
Speed:	Up to 40 cycles per minute (dependent on pouch size and product characteristics)
Approximate Weight:	800 lbs
Construction Materials	304 stainless steel, anodized 6061 aluminum and Lexan

All electrical components (AC) shall comply with UL61010A-1 (UL3101-1 first edition) or UL-sticker on the unit.